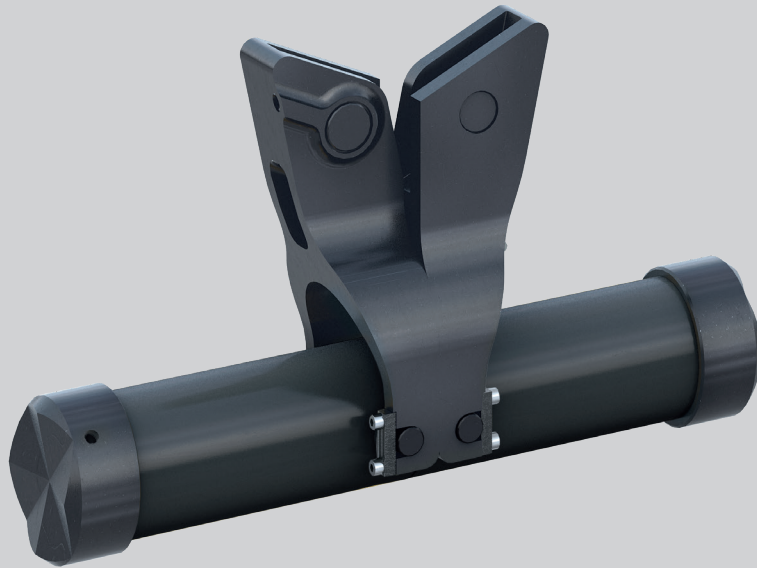


# MECHANICAL RESCUE RAM RZM CRT - BLACK EDITION

1094618BLK

**NEW!**



## The new mechanical rescue ram RZM CRT for combination tools with removable tips

- Standardized fitment compatible with all WEBER RESCUE combi tools with removable tips
- Captive bolts on the mounting arms for quick and easy attachment to the combination tool
- Combines the functionality of a rescue ram with a combi tool
- Expands the range of applications thanks to the large opening width
- Compact closed dimension of 320 mm

## Compatible rescue tools:

- RIT-Tool
- SPS 370
- SPS 370 MK2
- SPS 400
- SPS 400 MK2

## Possible uses and applications:

- making space for escape or access openings
- lifting of the dashboard or steering wheel
- opening car doors by spreading the window opening
- shifting loads
- lifting loads
- and many more

# MECHANICAL RESCUE RAM RZM CRT - BLACK EDITION

1094618BLK

**NEW!**



RIT-Tool E-FORCE3 with RZM CRT



SPS 370 MK2 with RZM CRT

## Technical data RZM CRT:

	Part no.	Weight	Closed dimension
RZM CRT	1094618BLK	7,8 kg	320 mm

## Technical data RZM CRT combined with RIT-Tool and other Combi tools:

Combi tool	Part no.	Weight (ready for use)	Opening	Max. pushing force
RIT-Tool E-FORCE2	1082900	21,0 kg	655 mm	23,4 kN
RIT-Tool E-FORCE3	1093377	21,0 kg	655 mm	23,4 kN
RIT-Tool HANDVARIO	1100441	18,9 kg	655 mm	23,4 kN
SPS 370	1063314	23,0 kg	760 mm	32,3 kN
SPS 370 MK2	1096648	22,4 kg	760 mm	32,3 kN
SPS 370 E-FORCE2	1077676	26,9 kg	760 mm	32,3 kN
SPS 370 MK2 E-FORCE3	1096649	25,2 kg	760 mm	32,3 kN
SPS 400	5931134	25,1 kg	795 mm	33,7 kN
SPS 400 MK2	1096650	24,2 kg	795 mm	33,7 kN
SPS 400 E-FORCE2	1079181	28,9 kg	795 mm	33,7 kN
SPS 400 MK2 E-FORCE3	1092611	28,8 kg	795 mm	33,7 kN

## WEBER-HYDRAULIK GMBH

Heilbronner Straße 30  
74363 Güglingen/Germany  
Phone +49 7135 71-10270  
Fax +49 7135 71-10396  
info@weber-rescue.com

Emil Weber Platz 1  
4460 Losenstein/Austria  
Phone +43 7255 6237-120  
Fax +43 7255 6237-12461  
info@weber-rescue.com

Images are non-binding.  
We reserve the right to technical modifications. 03/2022